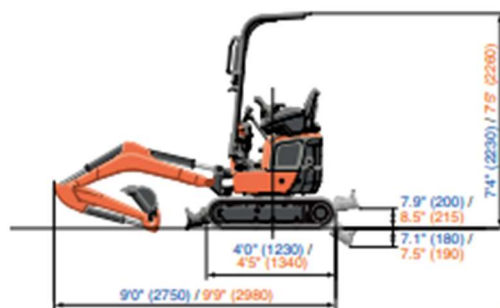


Specifications

Model		K008-5		U10-5		
Type of ROPS/FOPS		Canopy				
Type of tracks		Rubber				
Engine	Model	D722-E4-BH-4US		D722-E4-BH-5US		
	Output (SAE J1995 gross)	HP (kW) @ rpm	10.3 (7.7) @ 2050			
	Output (SAE J1349 net)	HP (kW) @ rpm	10.1 (7.5) @ 2050			
	Displacement	cu. in. (cc)	43.8 (719)			
Dimensions	Overall length	ft. in. (mm)	9'0" (2750)		9'9" (2980)	
	Overall height	ft. in. (mm)	7'4" (2230)		7'5" (2260)	
	Overall width	Standard	ft. in. (mm)	2'10" (860)		3'3" (990)
		Narrow	ft. in. (mm)	2'7" (800)		2'6" (750)
	Track gauge	Standard	ft. in. (mm)	2'10" (860)		3'3" (990)
		Narrow	ft. in. (mm)	2'4" (700)		2'6" (750)
Min. ground clearance	in. (mm)	5.9" (150)		5.5" (140)		
Hydraulic system	Pump capacity	GPM (ℓ/min)	2.8 (10.5) × 2		2.8 (10.5) × 2 / 0.8 (3.1) × 1	
	Auxiliary hydraulic flow	GPM (ℓ/min)	5.5 (21)			
	Max. breakout force	Bucket / Arm	lbs. (kgf)	2205 (1000) / 1012 (458.9)		2337 (1060) / 1214 (550.6)
Drive system	Travel speed	Low / High	mph (km/h)	1.2 / 2.5 (2.0 / 4.0)		
	Tumbler distance	ft. in. (mm)	2'11" (900)		3'4" (1010)	
	Crawler length	ft. in. (mm)	4'0" (1230)		4'5" (1340)	
	Shoe width	in. (mm)	7.1" (180)			
	Ground contact pressure	psi (kgf/cm ²)	4.1 (0.29)		4.2 (0.30)	
Swing system	Unit swing speed	rpm	8.3			
	Boom swing angle	Left / Right	degree	55 / 55		
Blade	Dimensions	Width	Std / Narrow	ft. in. (mm)	2'10" (860) / 2'4" (700)	3'3" (990) / 2'6" (750)
		Height	in. (mm)	7.9" (200)		
	Max. lift above ground	in. (mm)	7.9" (200)		8.5" (215)	
	Max. drop below ground	in. (mm)	7.1" (180)		7.5" (190)	
Hydraulic oil (Reservoir / System)	gal (ℓ)	3.6 / 4.8 (13.5 / 18)		3.3 / 4.5 (12.6 / 17.1)		
Fuel reservoir	gal (ℓ)	3.2 (12)				
Operating weight (Including operator's weight @ 165 lbs.)	lbs. (kgf)	2315 (1050)		2646 (1200)		

Dimensions

K008-5 / U10-5



Unit: ft. in. (mm)

K008-5/U10-5

Standard Equipment

Engine/Fuel system

- Kubota original engine

Undercarriage

- 7.1" wide rubber track
- Variable track
- 2-speed travel
- Double flange track rollers (piece number on each track: K008-5: 2 pcs / U10-5: 3 pcs)

Hydraulic system

- Hydraulic pressure checking ports
- One-way auxiliary circuit (AUX1) via foot pedal control
- Hydraulic pilot control levers with wrist rests (U10-5 only)
- TPSS

Safety system

- Engine start safety system
- Hydraulic lock system (U10-5 only)
- Operating lever lock (K008-5 only)

Working equipment

- 1 LED working light on the boom

Canopy

- ROPS (Roll-over Protective Structure, IS03471)

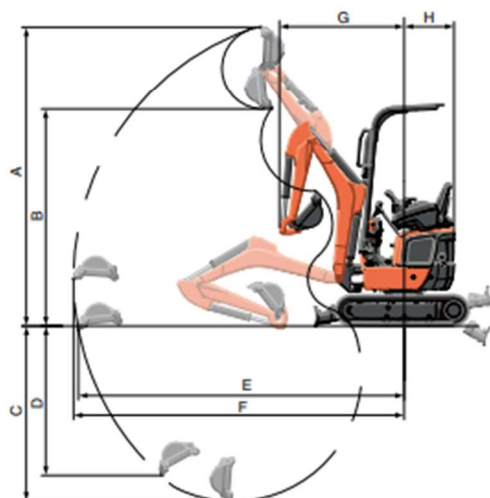
Optional Equipment

Others

- AUX1 2-way circuit kit

Working Range

Model		K008-5	U10-5	
A	Max. digging height	ft. in. (mm) 9'5" (2870)	10'0" (3050)	
B	Max. dumping height	ft. in. (mm) 6'8" (2030)	7'3" (2210)	
C	Max. digging depth	ft. in. (mm) 5'8" (1720)	5'11" (1800)	
D	Max. vertical digging depth	ft. in. (mm) 4'6" (1380)	5'1" (1550)	
E	Max. digging radius, at ground level	ft. in. (mm) 9'11" (3020)	10'11" (3330)	
F	Max. digging radius	ft. in. (mm) 10'1" (3070)	11'1" (3380)	
G	Min. turning radius	w/o swing	ft. in. (mm) 3'8" (1120)	4'2" (1260)
		with swing	ft. in. (mm) 3'1" (935)	3'6" (1075)
H	Min. tail turning radius	ft. in. (mm) 2'11" (880)	1'8" (510)	



Lifting Capacity

K008-5

LIFT POINT HEIGHT (ft)	LIFTING CAPACITY OVER-FRONT BLADE DOWN unit=1000 lbs			LIFTING CAPACITY OVER-SIDE unit=1000 lbs		
	LIFT POINT RADIUS (ft)			LIFT POINT RADIUS (ft)		
	4	6	8	4	6	8
6	-	0.38	-	-	0.33	-
4	-	0.44	0.39	-	0.32	0.20
2	1.02	0.56	0.40	0.53	0.29	0.19
GL	1.04	0.58	0.37	0.48	0.27	0.18

Machine with ROPS canopy and rubber crawler, without bucket

U10-5

LIFT POINT HEIGHT (ft)	LIFTING CAPACITY OVER-FRONT BLADE DOWN unit=1000 lbs			LIFTING CAPACITY OVER-SIDE unit=1000 lbs		
	LIFT POINT RADIUS (ft)			LIFT POINT RADIUS (ft)		
	4	6	8	4	6	8
6	-	-	0.42	-	-	0.26
4	-	0.49	0.42	-	0.40	0.25
2	-	0.68	0.45	-	0.37	0.24
GL	1.18	0.68	0.44	0.61	0.34	0.23

Machine with ROPS canopy and rubber crawler, without bucket

